

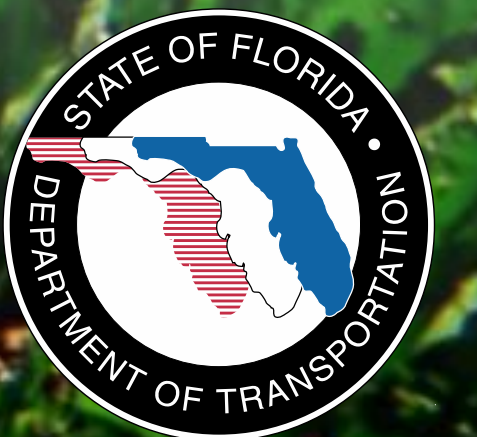
WEKIWA PARKWAY

Completing Central Florida's Beltway



A Regional Transportation Solution

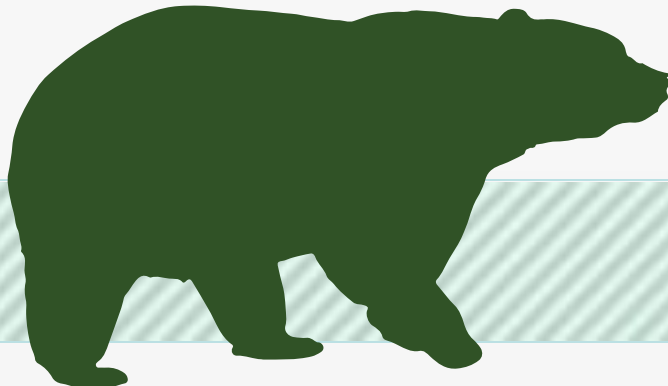
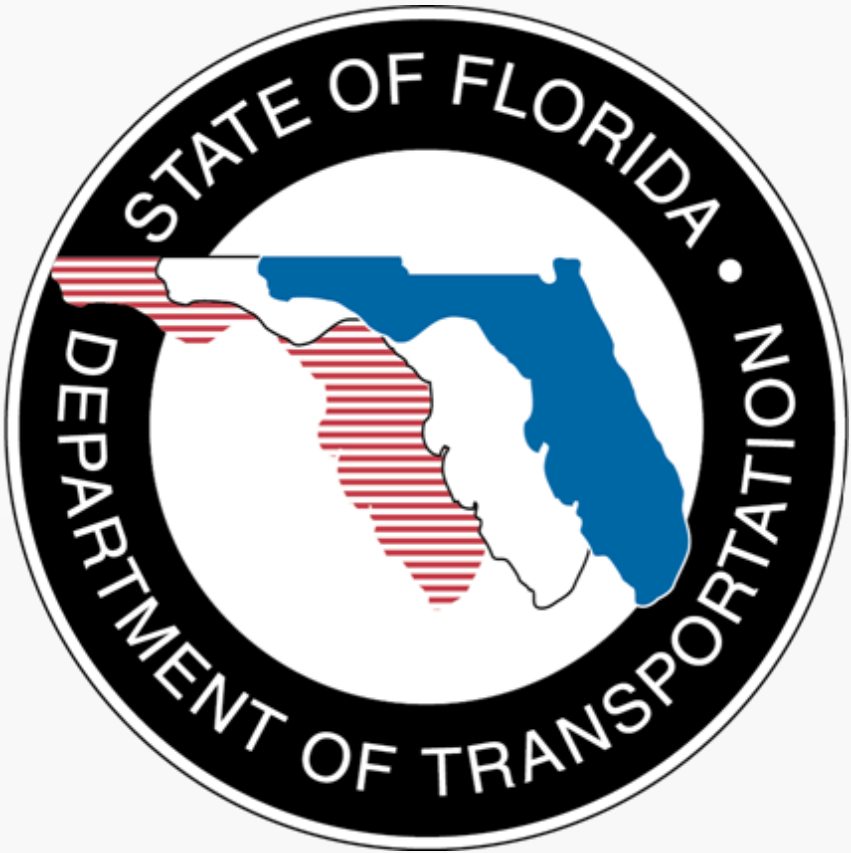
Foxspur HOA
Jan. 14, 2014



CENTRAL FLORIDA LEGACY PROJECTS



Funding Partners



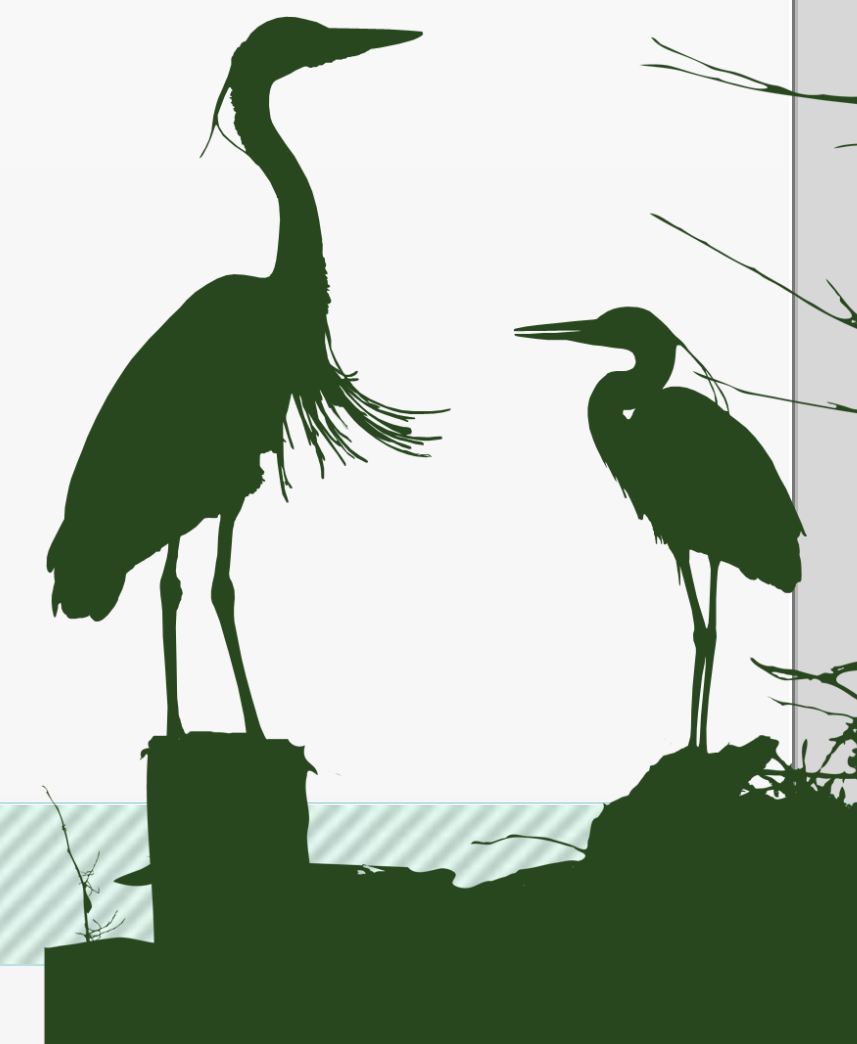
WEKIVA PARKWAY



WEKIVA PARKWAY

Project Description

- **\$1.6 Billion Completion of Central Florida's Beltway**
- **25-mile Toll Road**
- **Non-Toll Road Improvements:**
 - **Widening SR 46 in Lake & Seminole Counties**
 - **Rebuilding the US 441/SR 46 Interchange in Mount Dora**
 - **Relocating CR 46A to Improve Wildlife Connectivity**
 - **Parallel Service Roads in East Lake & Seminole Counties**
- **Multi-use Trail (Portions of East Lake & Seminole Counties)**



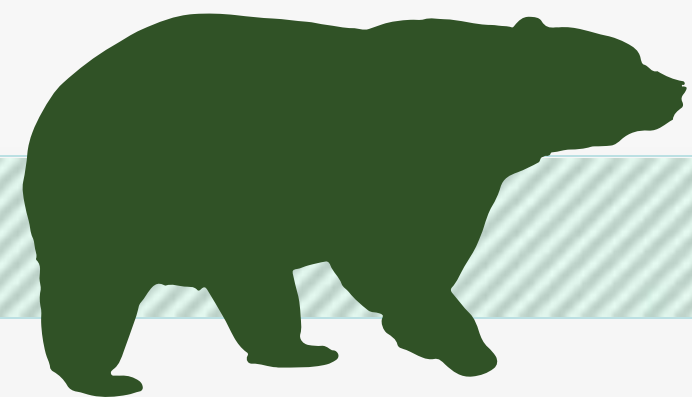
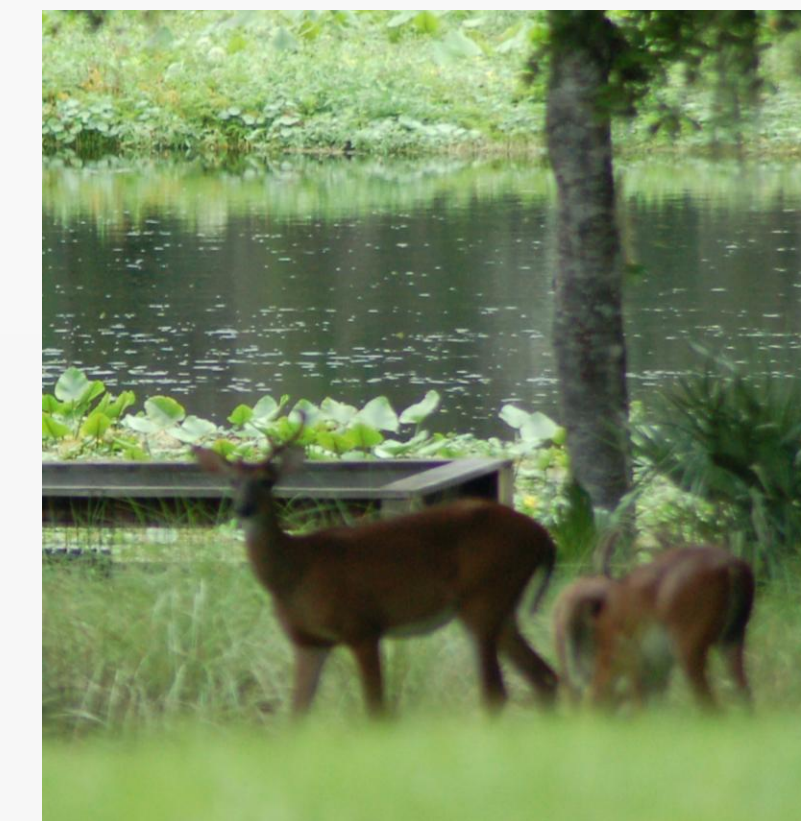
All Electronic Tolling (AET)

- **First in Central Florida**
- **No Toll Plazas (SUNPass or E-Pass)**
- **Improved Traffic Flow Efficiency**
- **Enhanced Safety**
- **Under Development: Locations & Costs**



Protecting Nature

- **Wekiva River: Outstanding Florida Water & National Wild & Scenic River**
- **Authorized by the 2004 Wekiva Parkway and Protection Act**
 - **Setting Aside More than 3,400 Acres for Conservation**
 - **Largely Elevated to Reduce Accidents Between Vehicles & Wildlife**
 - **Several Wildlife Bridges**
 - **Few Interchanges (Limit Development)**



PROJECT ECONOMIC IMPACT

At an estimated cost of \$1.6 Billion for Engineering & Construction, the Wekiva Parkway is Projected to Provide:

Construction Related Jobs	12,272
Supporting Industries Jobs	5,570
Induced Employment Jobs	17,983

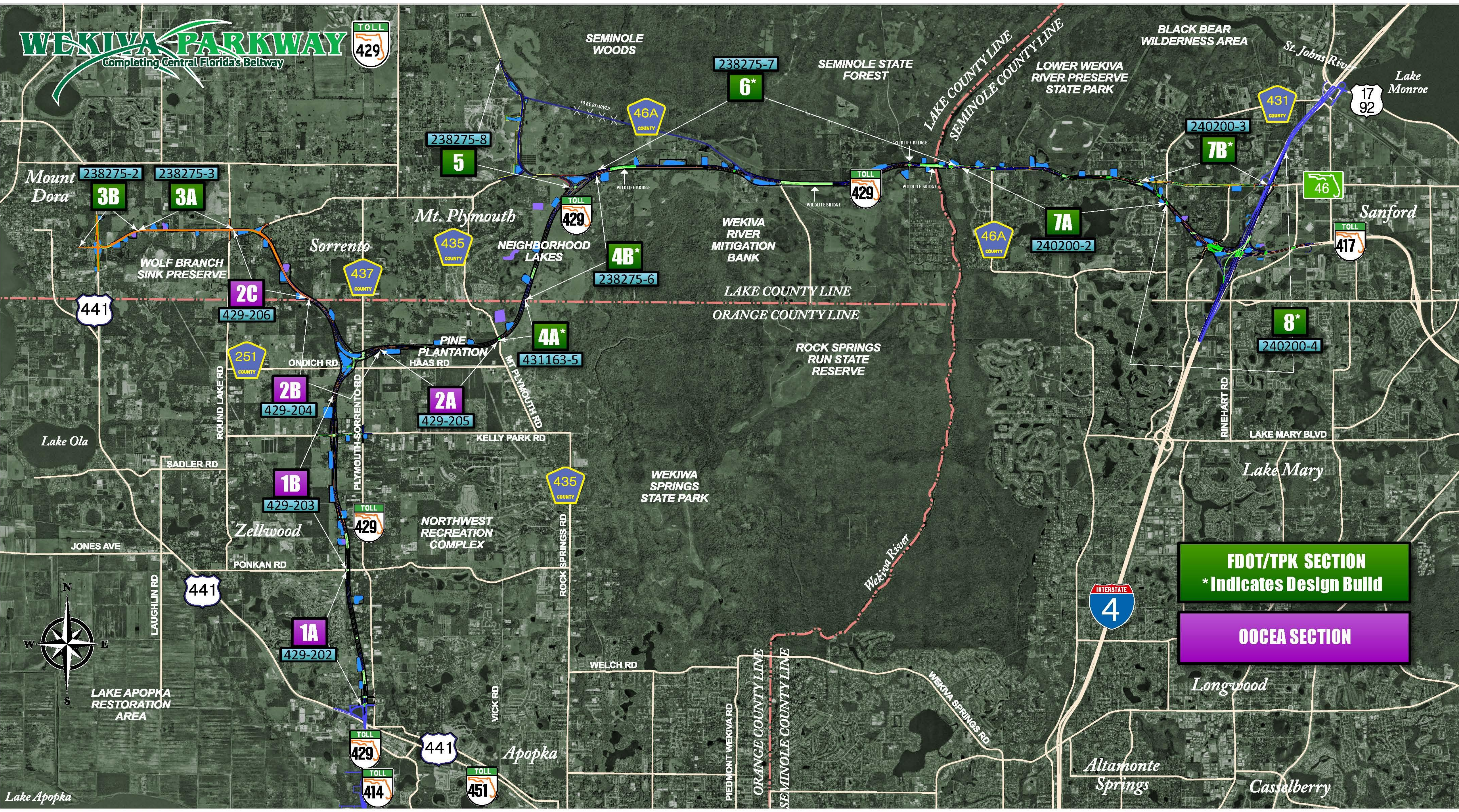
***Estimated Total Jobs 35,825**

Project Sections



WEKIWA PARKWAY

Completing Central Florida's Beltway



FDOT/TPK SECTION
* Indicates Design Build

OOCEA SECTION

Design Status

SECTION	MILESTONE	SUBMITTAL SCHEDULE
1A & 1B	100%	Feb. -March 2014
2A	90%	Spring 2014
2B	90%	Feb. 2014
2C	60%	March 2014
3A	30%	Dec. 2013
3B	60%	Dec. 2013
5	60%	March 2014
6	30%	Feb.- March 2014
7A	30%	Early 2014
7B & 8	Design-Build	



Expressway Authority Sections



Pier Option

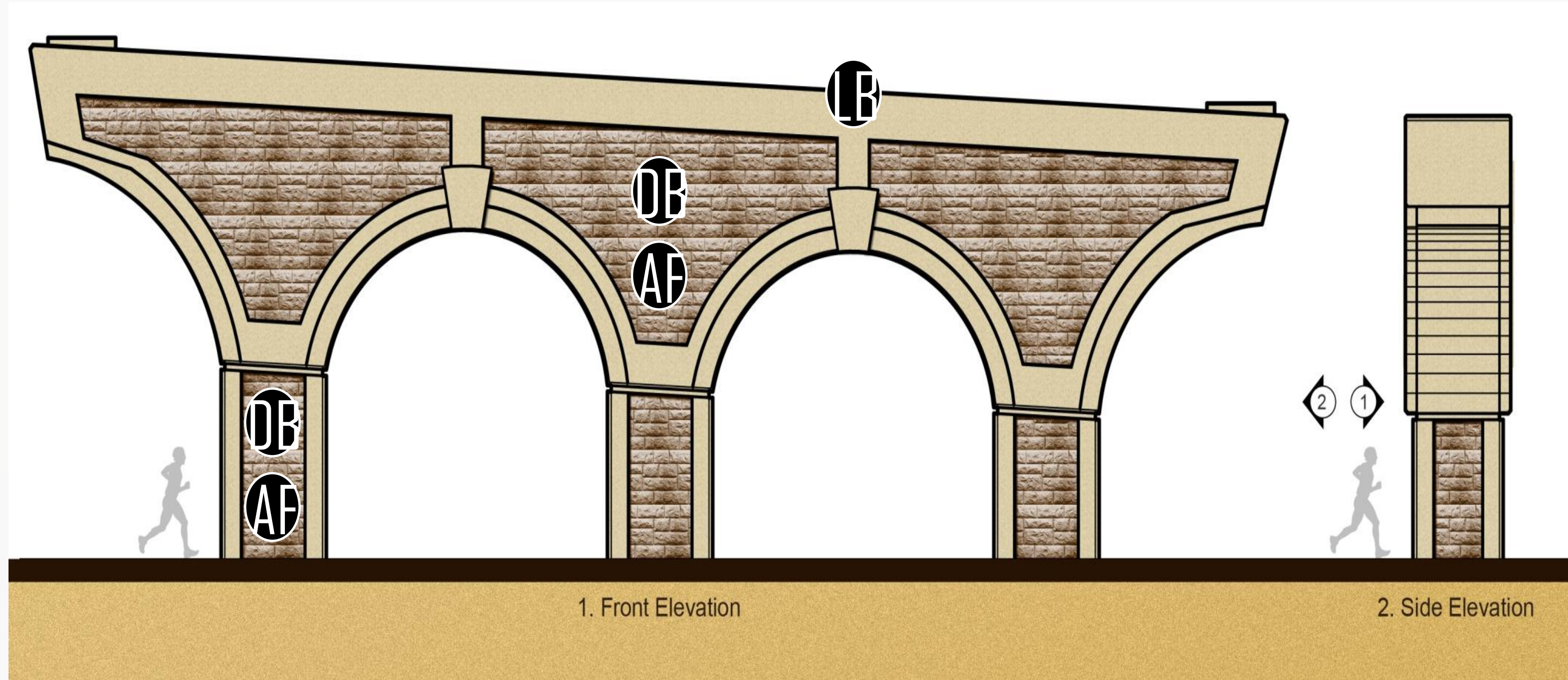
Standard Colors



Light Brown
Dark Green



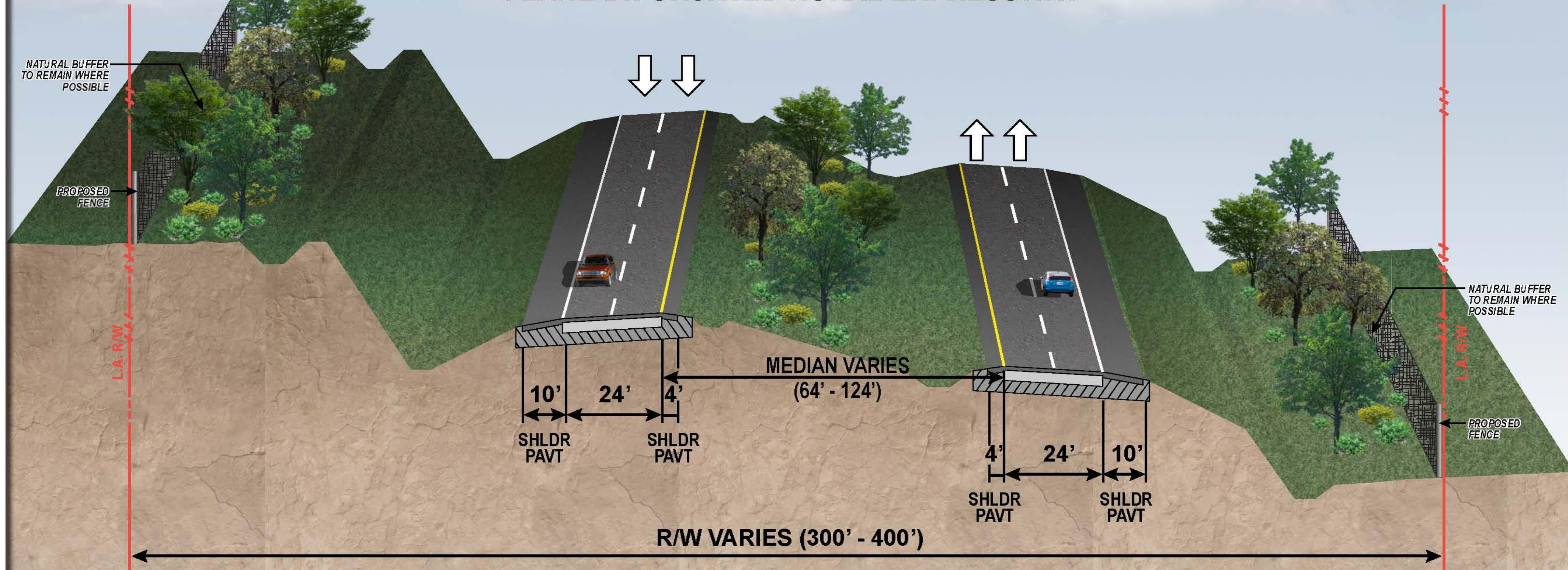
Dark Brown
Ashlar Formline



WEKIVA PARKWAY

TYPICAL SECTION

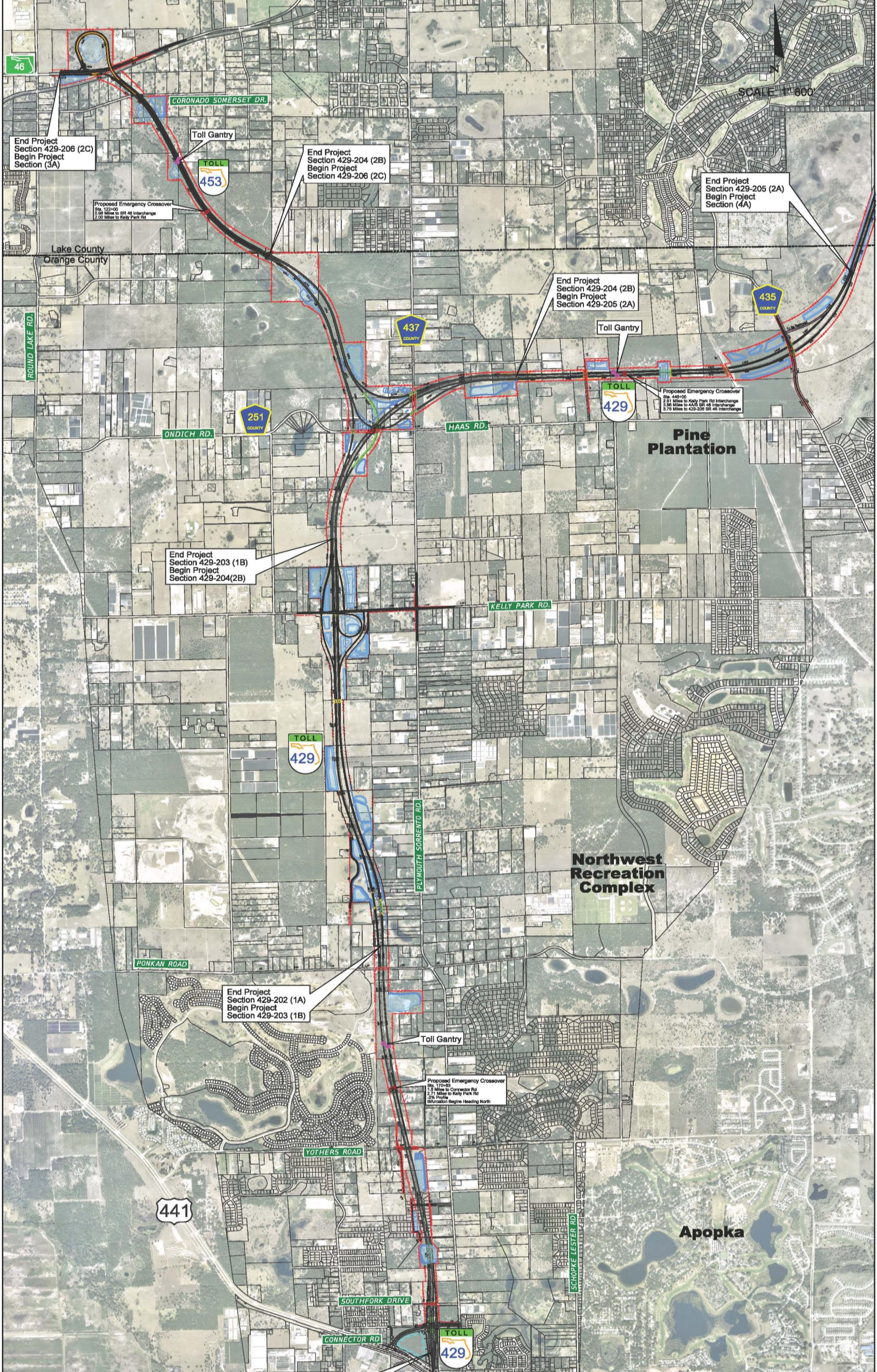
SR 429 (WEKIVA PARKWAY) 4-LANE BIFURCATED RURAL EXPRESSWAY



NOTE: PRELIMINARY, SUBJECT TO CHANGE



OOCEA Projects



Section 1A

SECTION 429-202 (1A)
60% Submittal Subject to Change

End Project
Section 429-202 (1A)
Begin Project
Section 429-203 (1B)

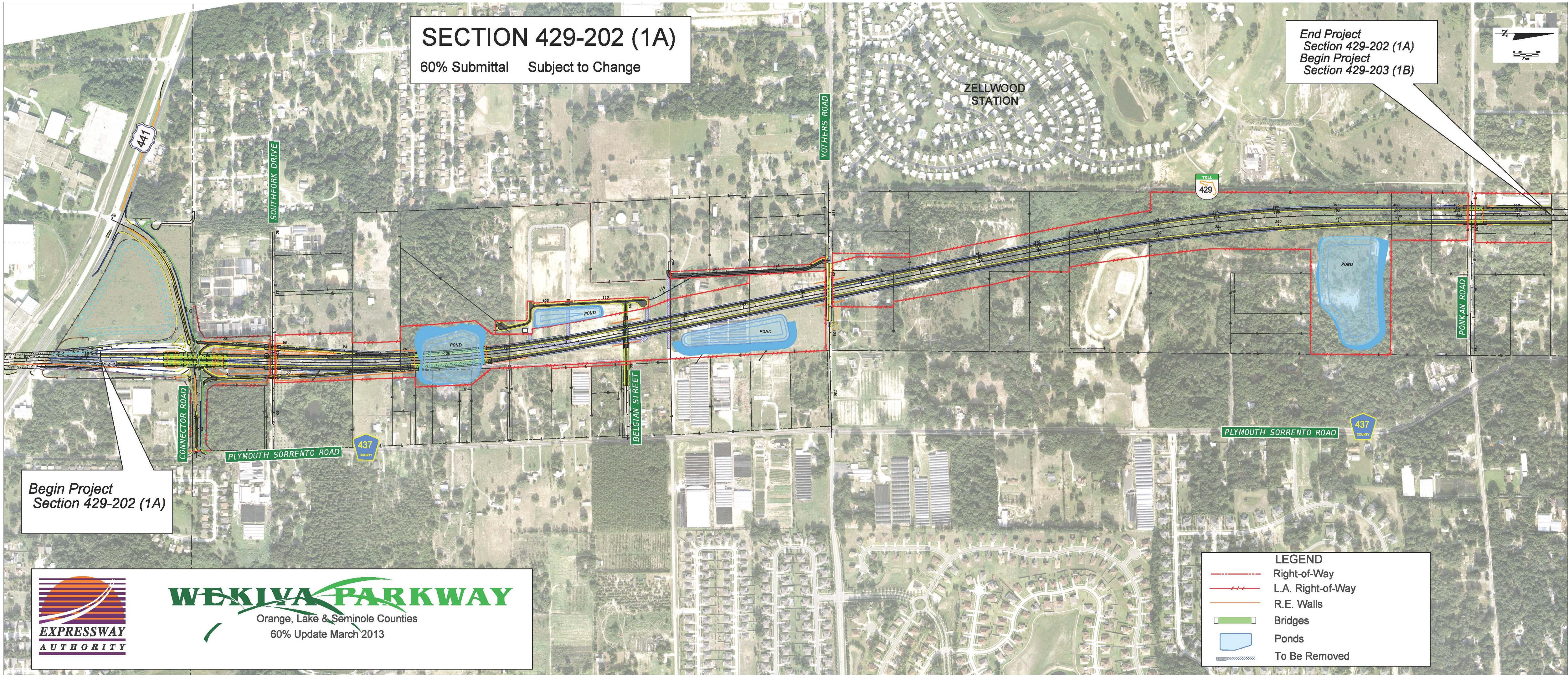
Begin Project
Section 429-202 (1A)



WEKIVA PARKWAY
Orange, Lake & Seminole Counties
60% Update March 2013

LEGEND

- Right-of-Way
- L.A. Right-of-Way
- R.E. Walls
- Bridges
- Ponds
- To Be Removed








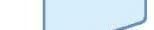
Section 1B

SECTION 429-203 (1B)

60% Update March 2013 Subject to Change

Begin Project
Section 429-203 (1B)
End Project
Section 429-202 (1A)

End Project
Section 429-203 (1B)
Begin Project
Section 429-204 (2B)

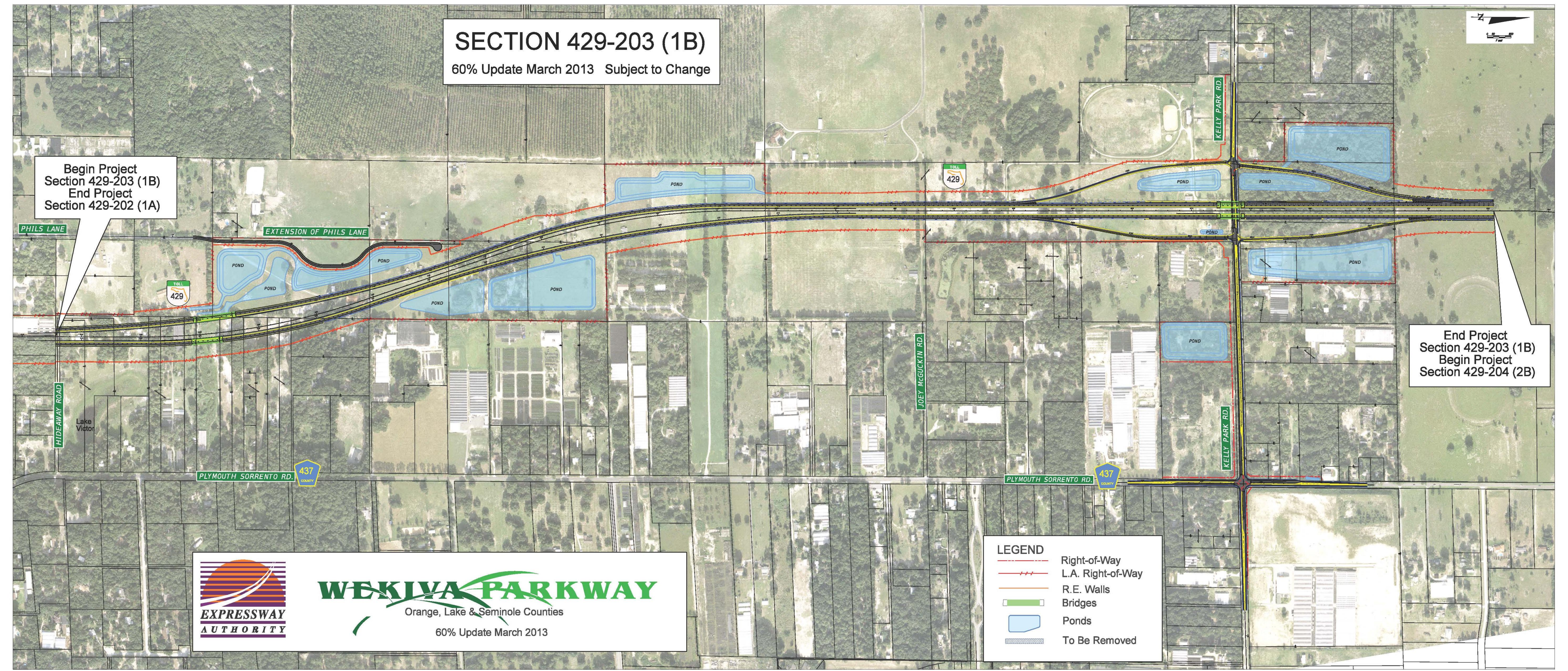
- LEGEND**
-  Right-of-Way
 -  L.A. Right-of-Way
 -  R.E. Walls
 -  Bridges
 -  Ponds
 -  To Be Removed



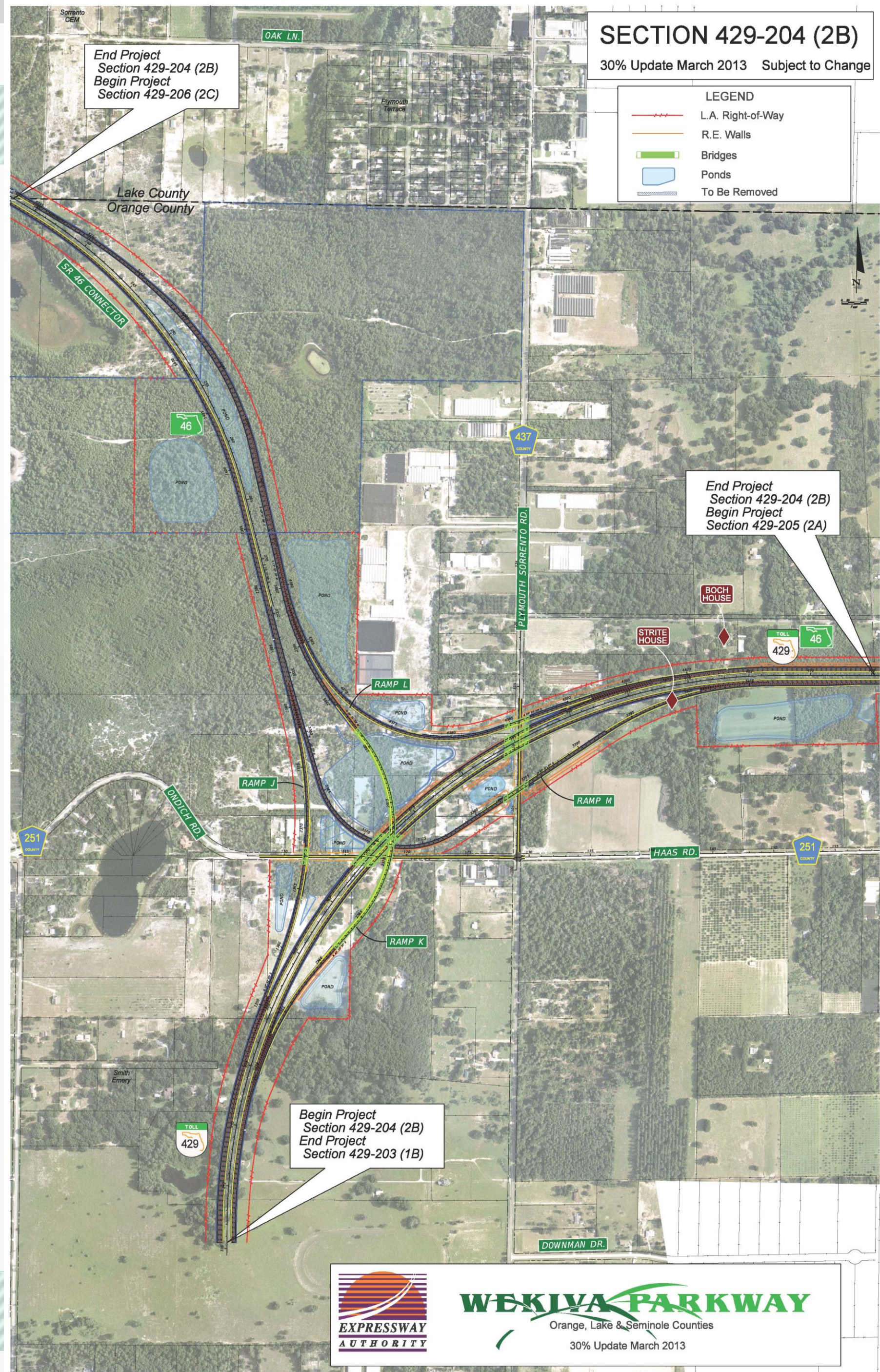
WEKIVA PARKWAY

Orange, Lake & Seminole Counties

60% Update March 2013



Section 2B



WEKIYA PARKWAY
Orange, Lake & Seminole Counties
30% Update March 2013



WEKIVA PARKWAY

Orange, Lake & Seminole Counties

Updated July 2013

SECTION 429-205 (2A)

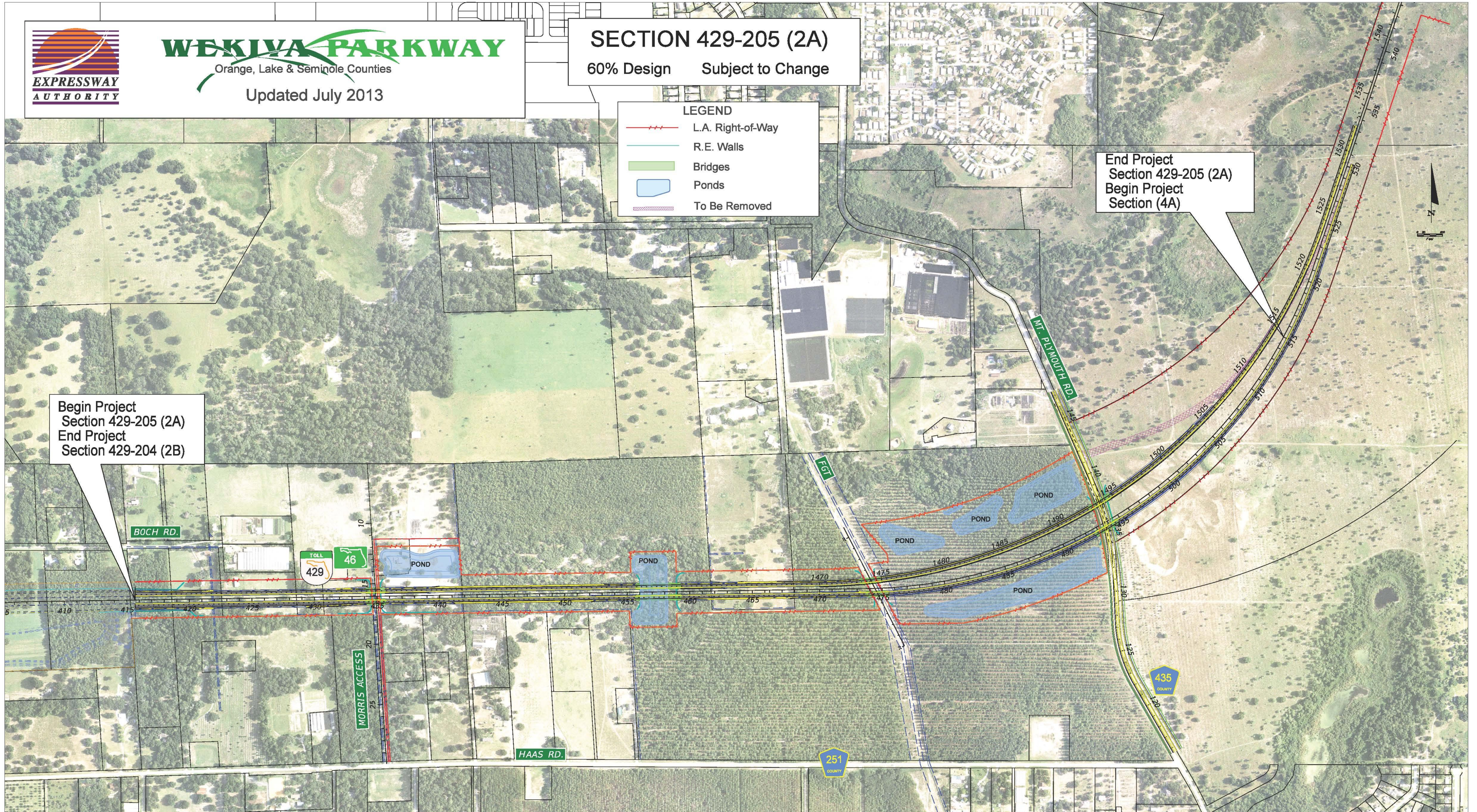
60% Design Subject to Change

LEGEND

- L.A. Right-of-Way
- R.E. Walls
- Bridges
- Ponds
- To Be Removed

End Project
Section 429-205 (2A)
Begin Project
Section (4A)

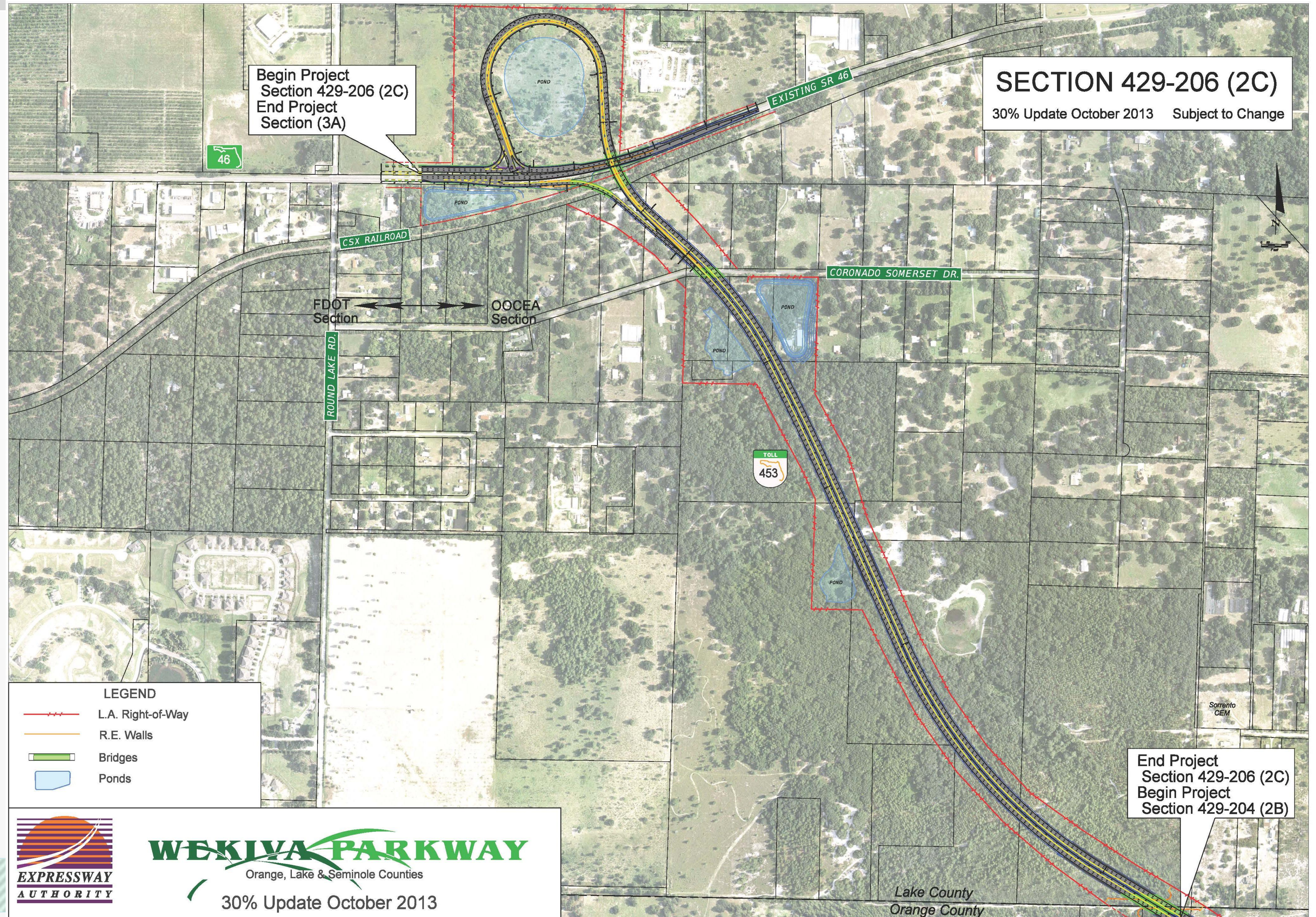
Begin Project
Section 429-205 (2A)
End Project
Section 429-204 (2B)



Section 2C

SECTION 429-206 (2C)

30% Update October 2013 Subject to Change



LEGEND

- L.A. Right-of-Way
- R.E. Walls
- ▭ Bridges
- ▭ Ponds



WEKIIVA PARKWAY
Orange, Lake & Seminole Counties
30% Update October 2013

End Project
Section 429-206 (2C)
Begin Project
Section 429-204 (2B)

Lake County
Orange County

Section 2 – Public Meeting Nov. 7, 2013



FDOT Sections



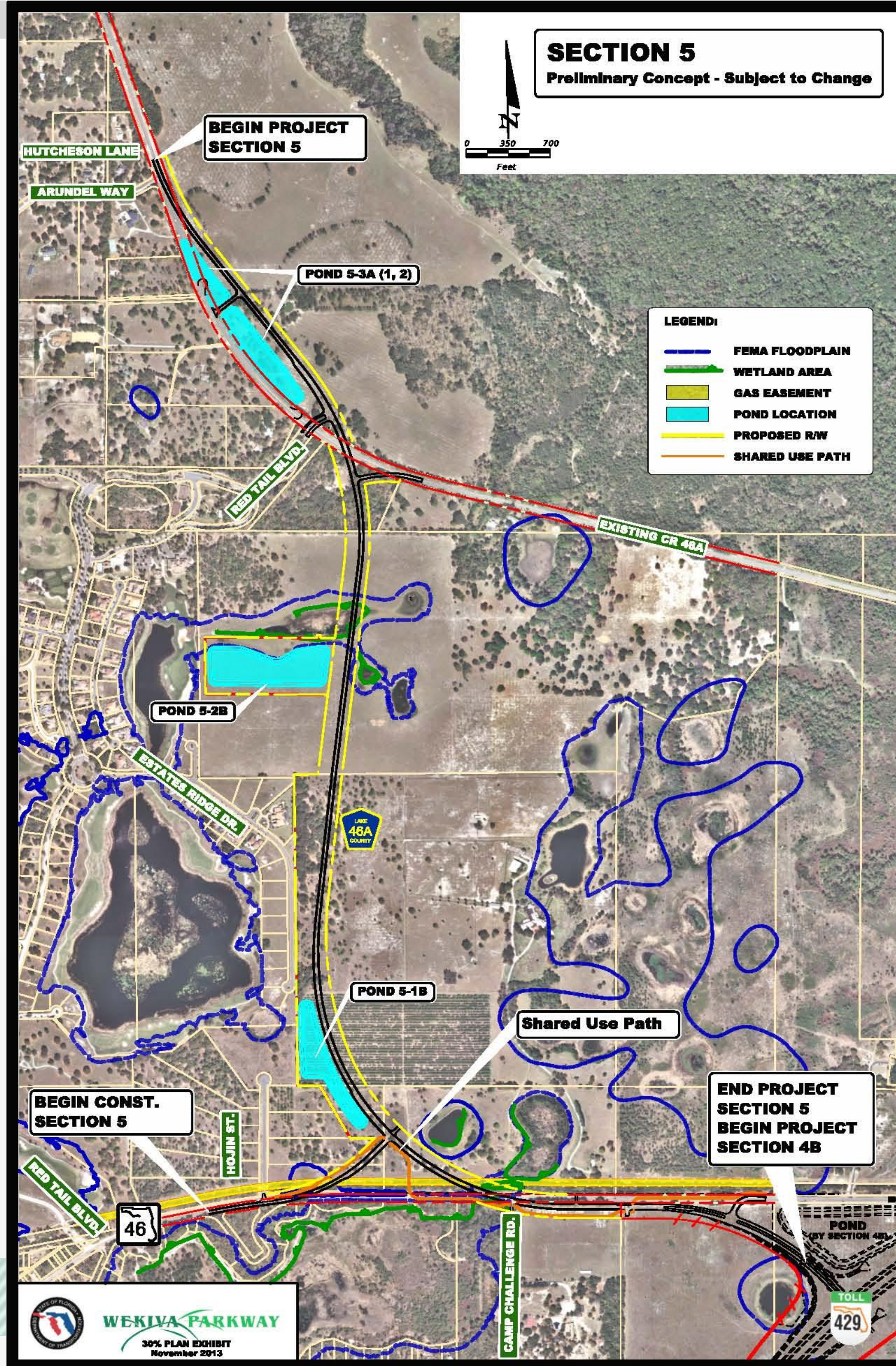
Section 4A & 4B



Section 4A & 4B



Section 5



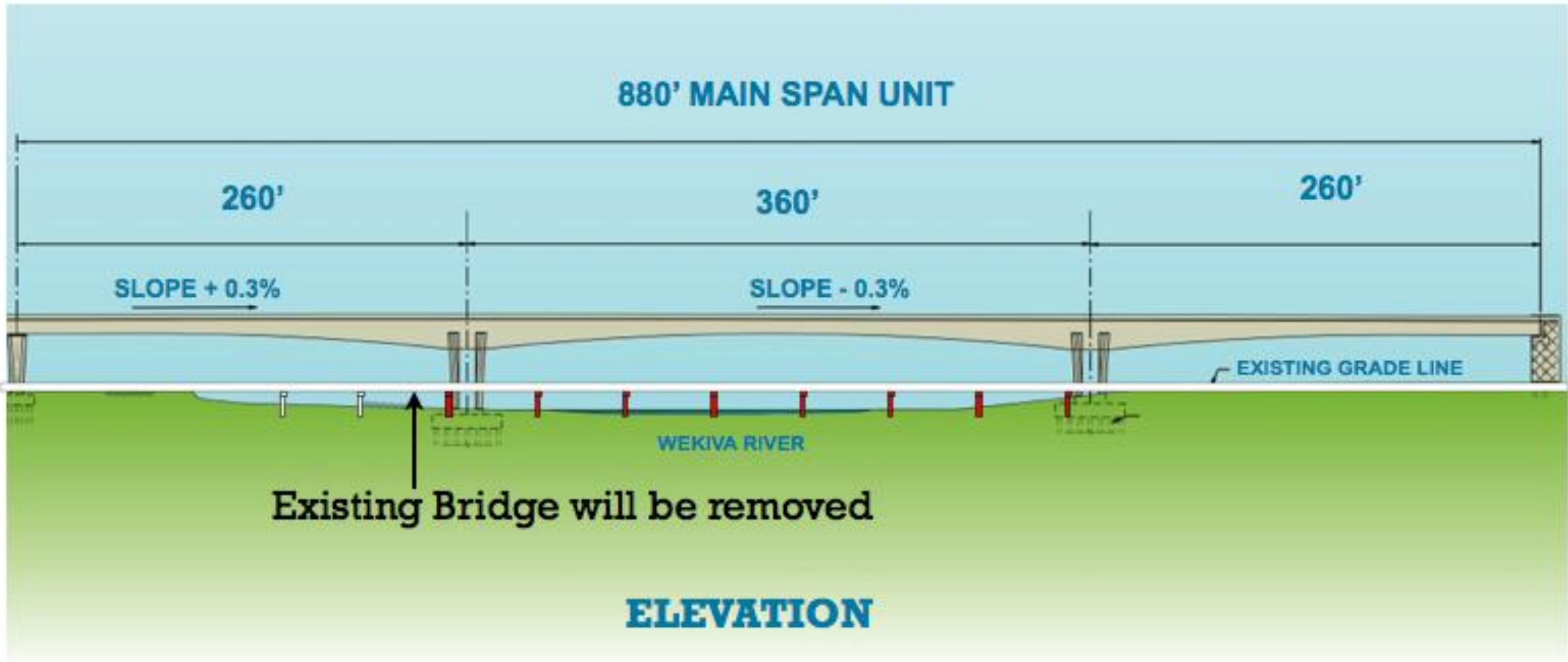
Section 6



Section 6 – Bridge Charettes



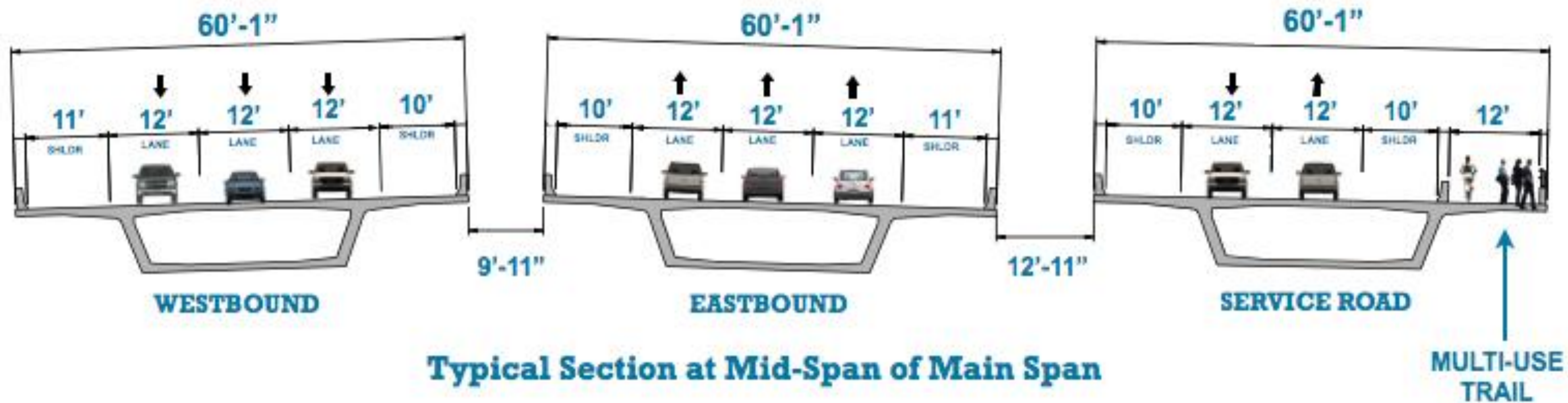
Wekiva River Bridge Concepts



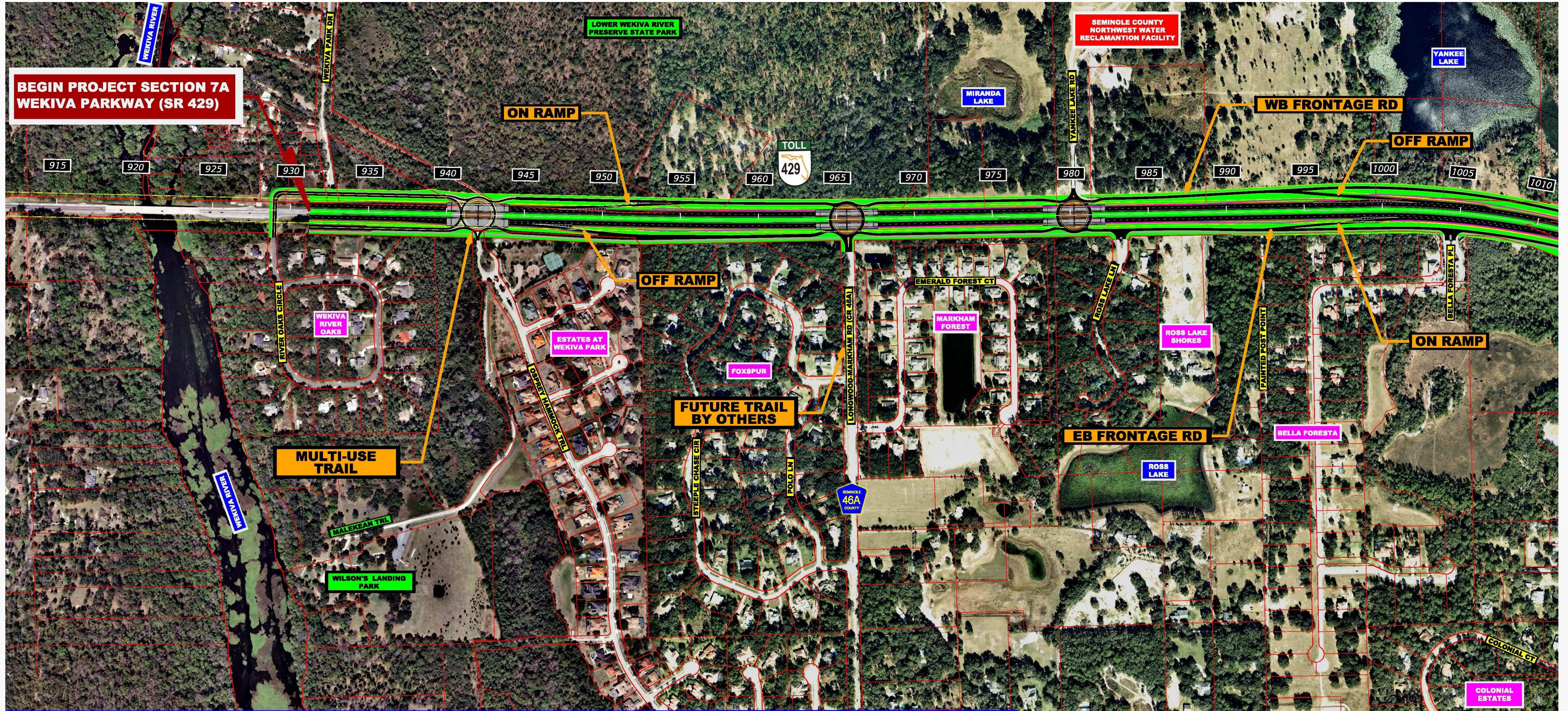
Section 6 – Bridge Concepts




Typical Cross Sections




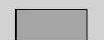
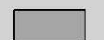


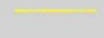


Section 7A - West



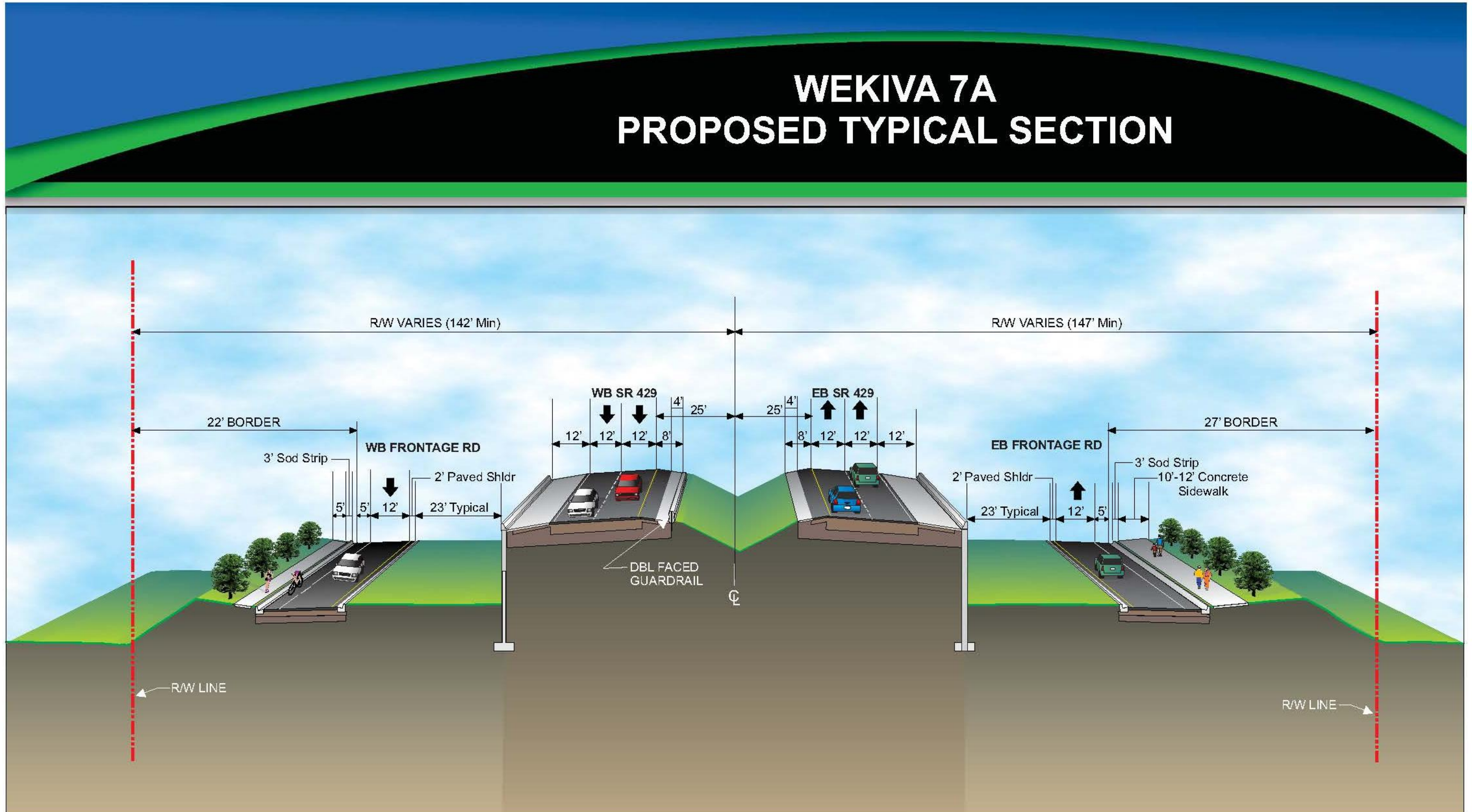

WEKIVA PARKWAY (SR 429)
SECTION 7A

LEGEND

	PROPOSED ROADWAY		SOD		SIGNALIZED INTERSECTION
	PROPOSED BRIDGE		PROPOSED SIDEWALK & SHARED USE PATH		EXISTING ROW & PROPERTY LINE
	PROPOSED L/A ROW		PROPOSED ROW		



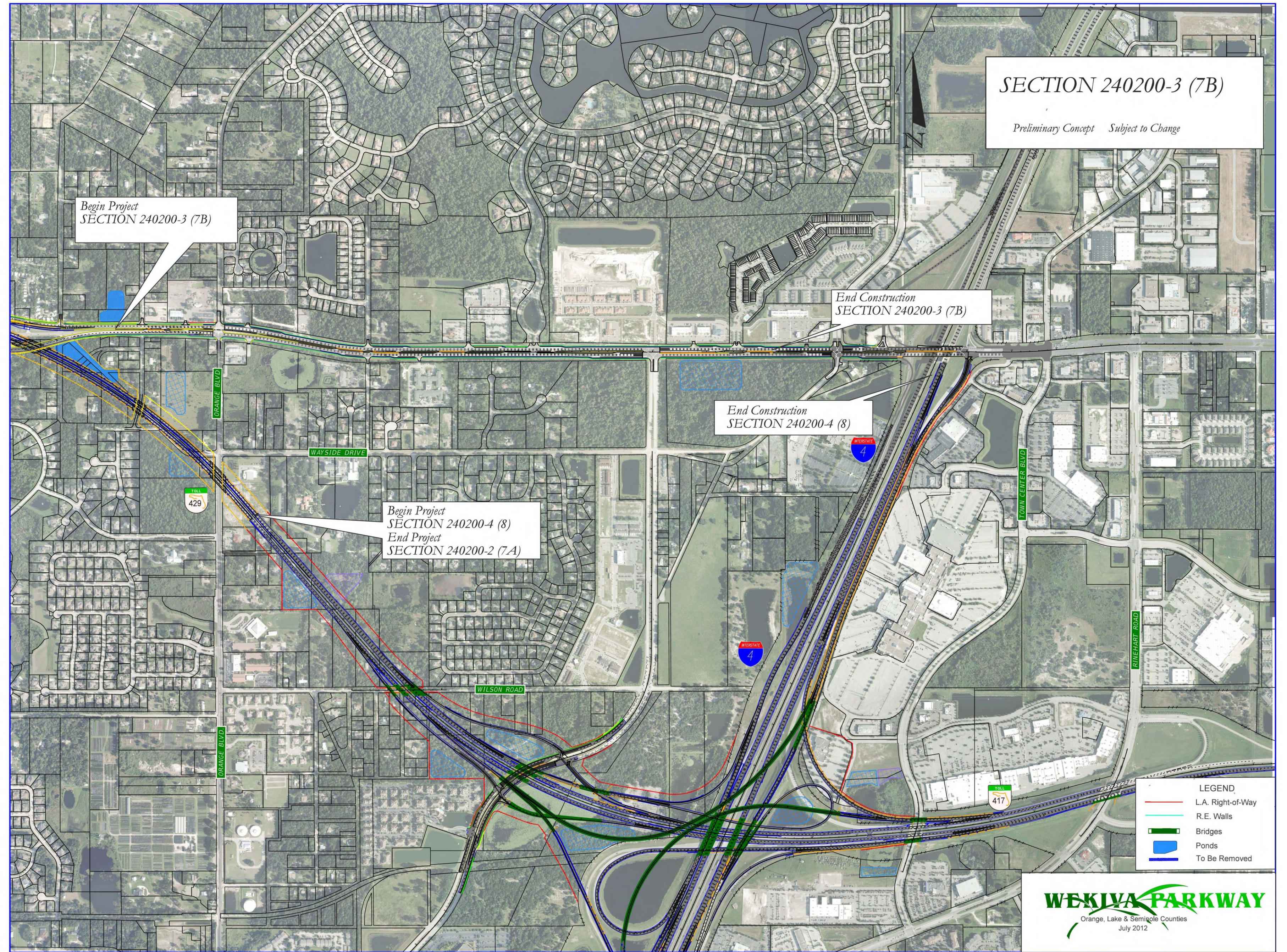
Section 7A – Typical Section



Section 7A – Public Meeting Nov. 12, 2013



Sections 7B & 8





Wekiva Parkway (SR 429) Schedule*



	2012				2013				2014				2015				2016				2017				2018				2019				2020				2021							
	Q1	Q2	Q3	Q4	Q1	Q2	Q3	Q4	Q1	Q2	Q3	Q4	Q1	Q2	Q3	Q4	Q1	Q2	Q3	Q4	Q1	Q2	Q3	Q4	Q1	Q2	Q3	Q4	Q1	Q2	Q3	Q4	Q1	Q2	Q3	Q4	Q1	Q2	Q3	Q4				
Section 1A - OOCEA																																												
Final Design																																												
Right of Way																																												
Construction																																												
Section 1B - OOCEA																																												
Final Design																																												
Right of Way																																												
Construction																																												
Section 2B - OOCEA																																												
Final Design																																												
Right of Way																																												
Construction																																												
Section 2A - OOCEA																																												
Final Design																																												
Right of Way																																												
Construction																																												
Section 2C - OOCEA																																												
Final Design																																												
Right of Way																																												
Construction																																												
Section 3A - FDOT																																												
Final Design																																												
Right of Way																																												
Construction																																												
Section 3B - FDOT																																												
Final Design																																												
Right of Way																																												
Construction																																												
Section 4A* & 4B* - FDOT																																												
Design-Build																																												
Section 5 - FDOT																																												
Final Design																																												
Right of Way																																												
Construction																																												
Section 6* - FDOT																																												
Preliminary Design																																												
Right of Way																																												
Design-Build																																												
Section 7A - FDOT																																												
Final Design																																												
Right of Way																																												
Construction																																												
Section 7B* - FDOT																																												
Design-Build																																												
Section 8* - FDOT																																												
Right of Way																																												
Design-Build																																												



Schedule Recap

The Wekiva Parkway will be completed and **open to traffic*** as follows:

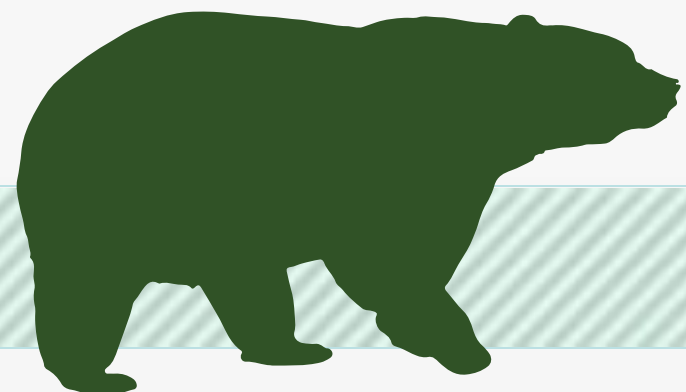
Orlando-Orange County Expressway Authority Sections:

- 1A & 1B – Late 2016
- 2A, 2B & 2C – 2019

Florida Department of Transportation Sections

- 3A, 3B & 5 – 2019
- 4A & 4B – Late 2014 (Under Construction)
- 6 – 2020
- **7A – 2020 - 2021**
- 7B & 8 – 2021

*Schedule Subject to Change



What's Next?

- **Final Design Continues**
- **Opportunities for Community Input**
 - ✓ **Public Meetings: Section 5 & 6 – April 29, 2014**
Section 1A & 1B – Summer 2014
 - ✓ **Community Presentations**
- **Section 4A & 4B Open to Traffic – Late 2014**
- **Sections 1A & 1B Construction – Start Late 2014/Early 2015**



For More Information:

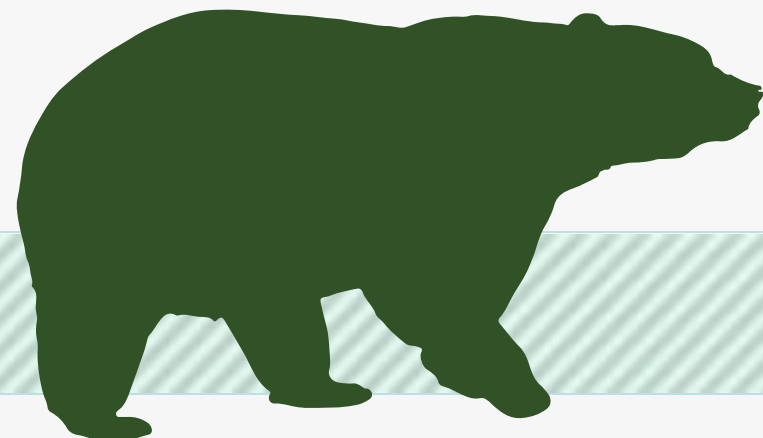
Mary Brooks

Public Involvement Coordinator

C: 407-694-5505

E: Info@wekivaparkway.com

W: www.wekivaparkway.com



The screenshot shows the official website for Wekiva Parkway, titled "Completing Central Florida's Beltway". The page features a navigation menu with links for Home, FDOT Projects, COCEA Projects, Projects by County, Project History, and Contact Us. A "TOLL 429" logo is prominently displayed. The main content area includes a "WELCOME" section with a project overview and a list of improvements: building seven miles of four- and six-laning of SR 46, rebuilding the US 441/SR 46 interchange, and relocating the CR 46A connection. Below this is a "WEKIVA PARKWAY PROJECT SECTION MAP" with a legend indicating "FDOT/TPK SECTION" (green) and "COCEA SECTION" (purple). A "LATEST NEWS" sidebar on the right lists recent updates from August 2013 to May 2013, including design plan milestones and public meetings. At the bottom, there are social media icons for Twitter and Facebook.



WEKIWA PARKWAY

Completing Central Florida's Beltway



Thank You!
Questions?

